

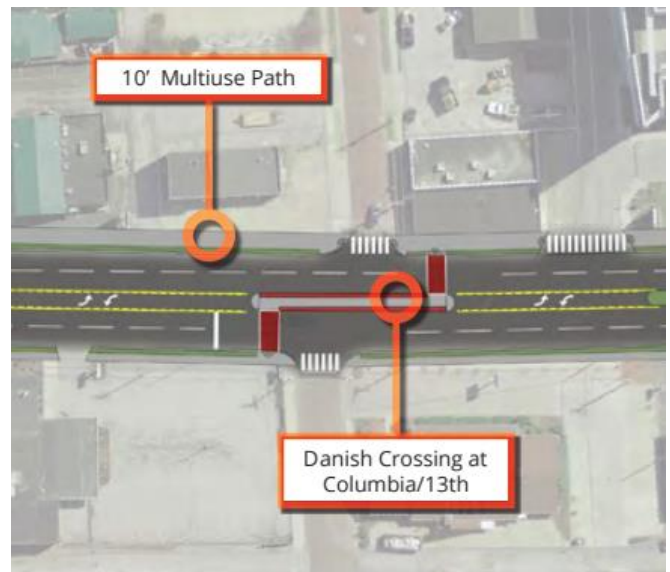
HAL GREER BOULEVARD COMPLETE STREET PROJECT: DANISH CROSSING



Danish Crossing in Las Vegas, Nevada Image: US Federal Highway Administration

A Danish Crossing, also called a Danish Offset or Z-Crossing (because of its unique, z-shaped design), is a type of crosswalk used on multi-lane roads. This crosswalk has two segments off-set from each other with a protected median. This design makes pedestrians face oncoming traffic so they can see when it is safe to cross the street. The protected median in the center shortens the distance that pedestrians must cross and provides a safe area for pedestrians waiting for an opening to cross.

The Hal Greer Blvd. project will feature a Danish Crossing at the Columbia/13th Ave. intersection, to help pedestrians safely cross near Cabell Huntington Hospital.



Aerial rendering of Danish Crossing from Corridor Management Plan

Sources: https://www.codot.gov/business/designsupport/bulletins_manuals/roadway-design-guide/ch14
<https://docs.lib.purdue.edu/cgi/viewcontent.cgi?article=3328&context=jtrp>

