



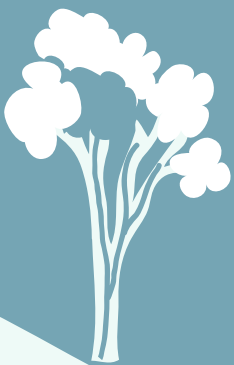
CONSTRUCTION

STORMWATER INFORMATION

PREVENTING POLLUTION

Keeping trash, building materials, and waste in containers will keep it onsite and tidy.

PROTECT EXISTING VEGETATION



Areas that will be used for bioretention or infiltration need to be protected to prevent soil compaction. Existing trees can be protected by fencing off area around them.

INSTALL PERIMETER CONTROLS

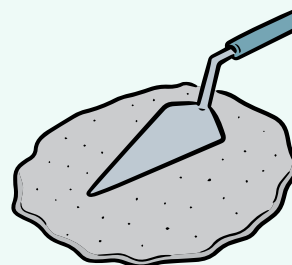
Silt fence needs to be properly entrenched and maintained to function properly. Fiber rolled erosion controls (wattles) can be used if staked into the ground.

INLET PROTECTION

Storm drains need to be protected from sediment during construction. Devices can be installed around on inside the drain.

CONCRETE WASHOUT

Concrete is very corrosive and contains metals which should not be dumped onto the ground. Plastic lined or containers should be used for excess concrete.

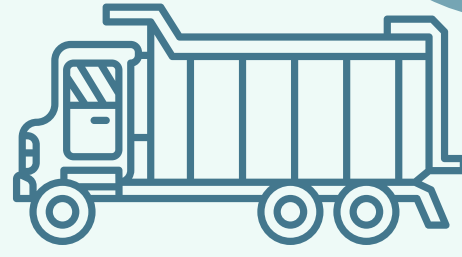


**HUNTINGTON STORMWATER IS AVAILABLE IF YOU
HAVE QUESTIONS: 304-942-2525**

CONSTRUCTION EXIT

Maintain a rock construction exit to prevent tracking of sediment off site.

Sweep any sediment back onto site that accumulates daily.



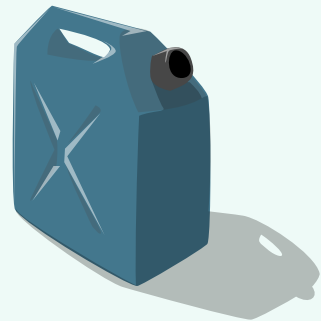
INSPECT BMPS REGULARLY

One person on site should be tasked with inspecting the exit, inlet protection, and perimeter controls.

SECONDARY CONTAINMENT

Hazardous liquids like diesel should be in a container with secondary containment.

This can be a double walled tank.



STOCK PILES

Stock piles need to have soils stabilized within 14 days if not being used. Soils can be covered, seeded, or contained to prevent erosion from water and wind.

SPILL PREVENTION

Reducing the amount of vehicle and machinery maintenance will reduce spills and leaks. Leaks need to be cleaned up and disposed of depending on the type of substance.